

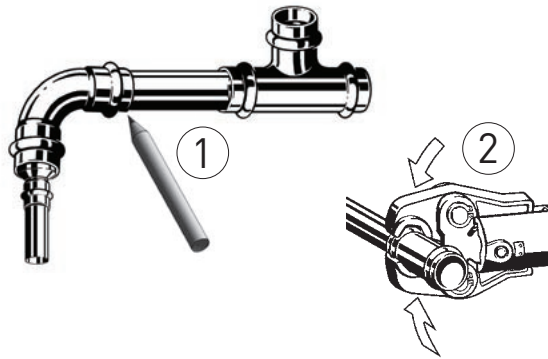


Top Tips for Cost Effective Installations

VEIGA PROPRESS TIPS AND SHORT CUTS

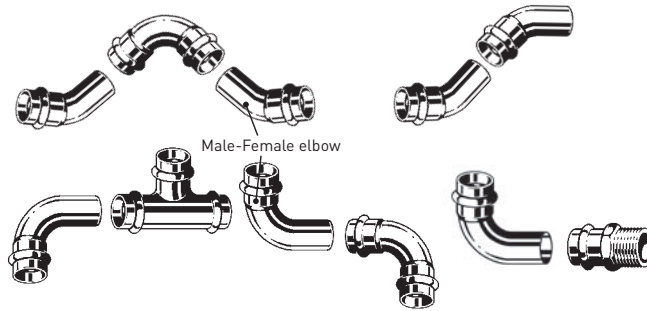
Tip 1
Fittings (DN15-50) generally apply sufficient hold so you can assemble the components first, then work quickly and efficiently from one end to the other with the pressing tool.

- ① Assemble and witness mark.
- ② Work from one end of the assembly to the other pressing fittings as you go.



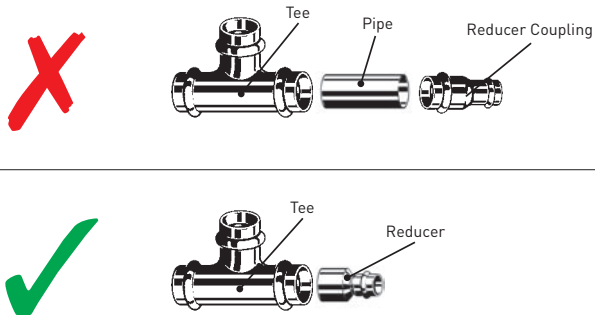
Tip 2
Create a myriad of different shaped bends using the MALE-FEMALE ELBOWS.

Utilising the male-female elbows wherever practical can reduce the number of joints and installation costs and also reduce offset distances.

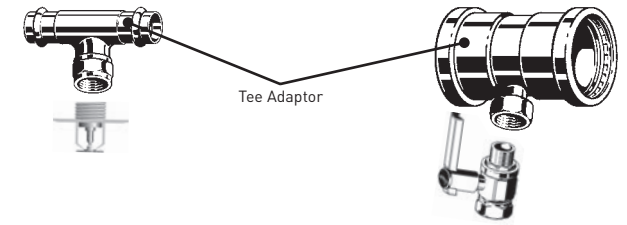


Tip 3
To reduce the line size, use a 'REDUCER' not a 'REDUCING COUPLING (No.1R)'.

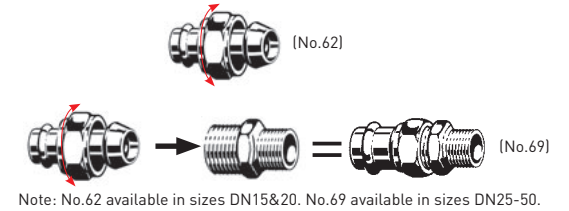
This will reduce the number of joints and is much more cost effective, particularly with XL fittings (DN65, 80 and 100).



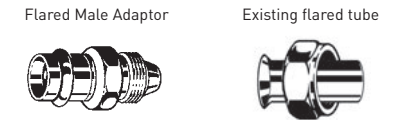
Tip 4
Use the Tee Adaptor for sprinkler services or when cutting into a line for valves, gauges, etc.



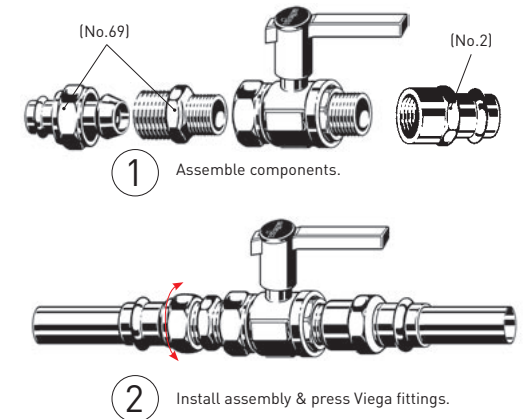
Tip 5
Viega Union (No.62) & (No.69). These are loose nut unions with tapered seats which allow connection and/or disconnection of the joint after pressing.



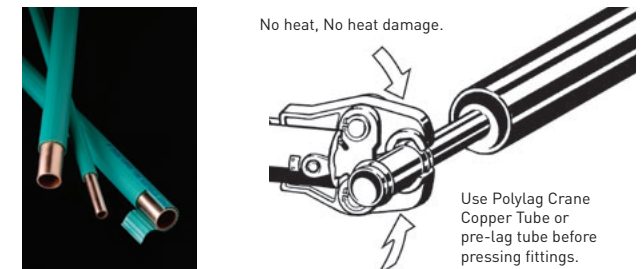
Tip 6
Use a 'Flared Male Adaptor' for joining to existing flared tube fittings.



Tip 7
As no heat is required for Viega fittings, apply thread tape and install threaded fittings to each side of a valve on the ground or bench. Then fit the assembly into position, press the Viega fittings.

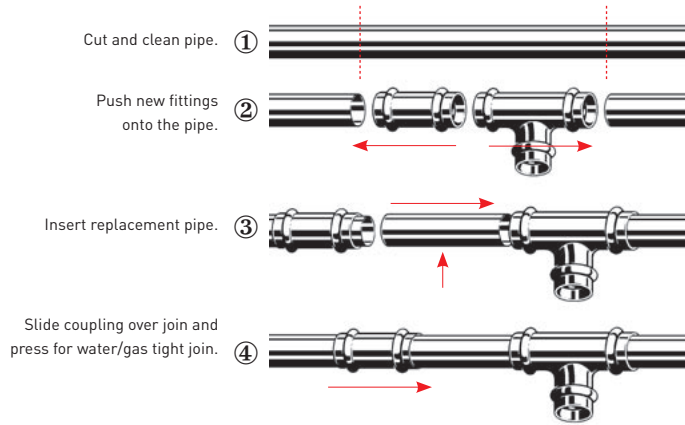


Tip 8
Pre insulate the copper tube, because no heating is needed for joins, the insulation will not suffer heat damage.



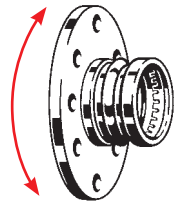
Tip 9

Use a repair coupling to replace damaged pipe or when installing a new fitting to existing pipe. Note: In some cases two repair couplings may be required.



Tip 10

Flange couplings can be freely rotated to allow for bolt alignment.



Available from:

Tradelink

Availability may differ, please contact your local Tradelink store for details. Ask your plumbing centre for more information, call Crane Copper Tube on **1800 043 117** to request a free product brochure, or visit our web site at: www.cranecopper.com.au and find out how the Viega Propress™ system can make your job faster... easier... and more profitable.

 **Crane Copper Tube**

Crane Copper Tube

ABN 51 008 408 151
A Division of Crane Enfield Metals Pty. Limited.
PO Box 319, Penrith NSW 2751
Phone: 02 4720 5350
Fax: 02 4720 5390
sales@cranecopper.com.au
www.cranecopper.com.au



 Crane Copper Tube

NEW 4B Press Tool for Viega Propress systems

PROFESSIONAL FITTING SYSTEM FOR GAS & WATER INSTALLATIONS



New 4B pressing tool from Viega... smaller, lighter, longer battery life...

- Ultra fast installation compared with soldering or brazing, and no need to set-up and drag gas bottles and hoses around the site.
- Joints quickly pressed with easy to use Viega battery powered electro-hydraulic hand tool. Same tool does gas and water installations.
- The new Lithium ion battery offers 60% more battery capacity with no memory effect.
- With a reduced weight of 4.35kg (without jaws) and smaller size, the new 4B tool is easier to handle and carry.
- 180° rotatable head with compulsory pressing and auto return helps insure a correct join even in difficult locations.
- An incredible service interval of 32,000 pressings means lower costs and increased productivity.

Propress™
GAS

Propress™
WATER